

Vocabulary Grammar and Punctuation Terminology

Prefix

A prefix is added to the beginning of a word to turn it into a different word.

submerge

disappear

return



Vocabulary Grammar and Punctuation Terminology

Inverted Commas

Inverted commas (speech marks) go around the speaker's words only. Use them in stories to show when a character is speaking.

“Why didn't anyone tell me I had my underpants on the outside?” asked Flashman.

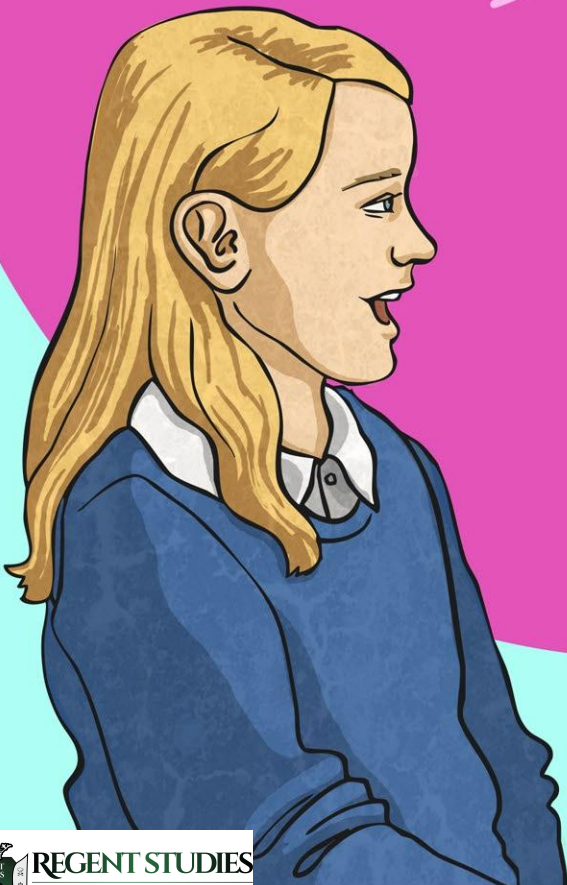


Vocabulary Grammar and Punctuation Terminology

Direct Speech

Direct speech is the words which actually come out of someone's mouth.

Like the speech bubbles in a cartoon.



Vocabulary Grammar and Punctuation Terminology

Consonant Letter

A consonant is a letter sound made when you use your teeth, lips and/or tongue to change how the air comes through your mouth.

Most letters are consonants, like these:

- The sounds **p** and **b** are made when you close your lips then open them quickly.
- The sound **t** is made when you press your tongue behind your top teeth.



Vocabulary Grammar and Punctuation Terminology

Vowel Letter

A vowel letter is one that you make by just changing the shape of your open mouth. You don't use your teeth, tongue or lips.

- The letters **a**, **e**, **i**, **o** and **u** are vowels. They can be spoken or written.
- The letter **y** can also be used to represent a vowel sound.

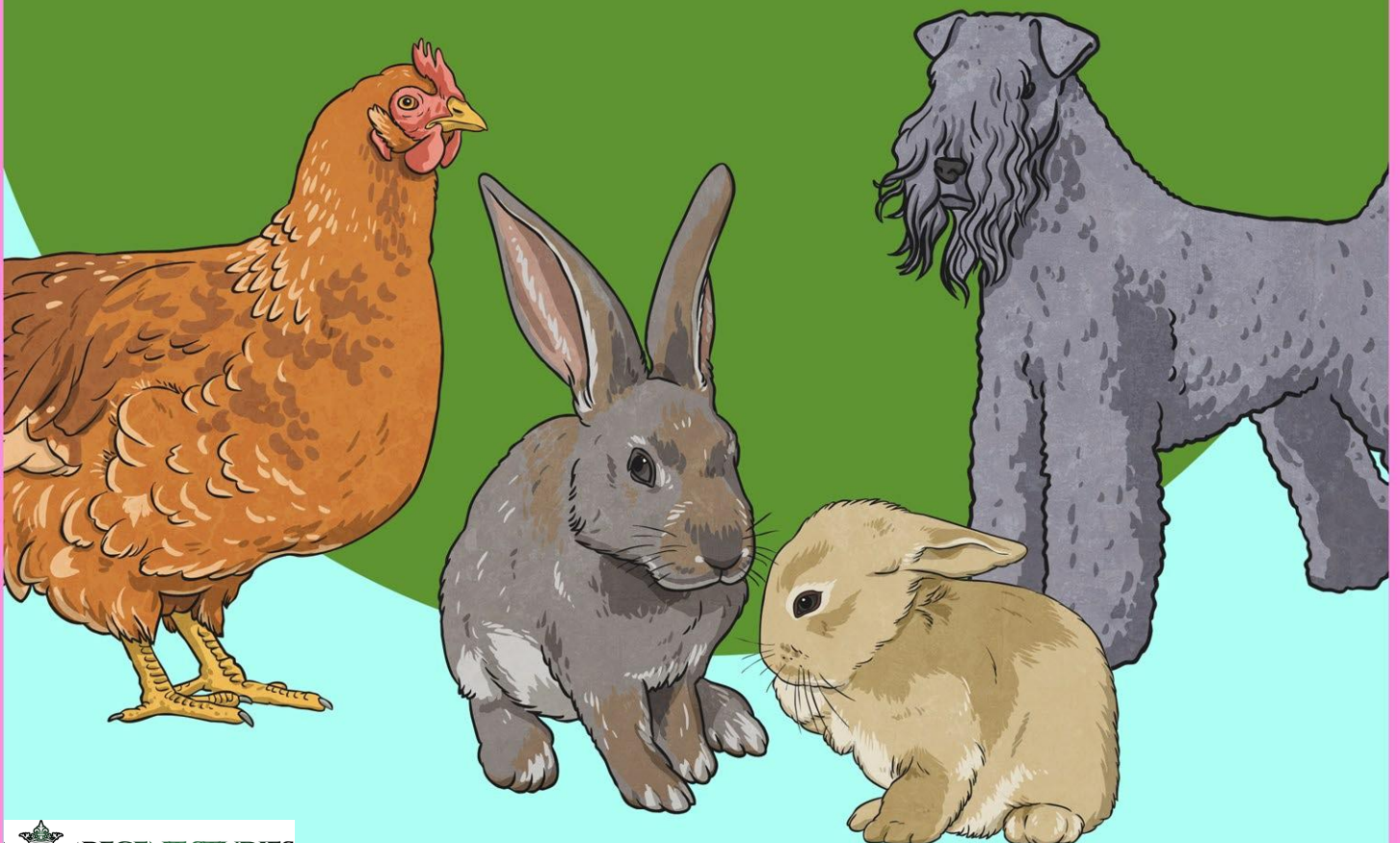


Vocabulary Grammar and Punctuation Terminology

Clause

A clause is a phrase of two or more words.
It has a verb as the key word.

- **It's raining.**
- **Samira has four pets** because she likes animals.



Vocabulary Grammar and Punctuation Terminology

Subordinate Clause

A subordinate clause adds to another clause.
It can't be a sentence by itself.

- **Here's the book that I promised you.**
- **When I grow up, I want to be a pilot.**



Vocabulary Grammar and Punctuation Terminology

Preposition

A preposition links a noun or noun phrase to another word. They often mark direction or locations, but can also make time links.

- Please put your pens **in** the tub.
- We went **to** the USA on holiday.
- I haven't seen her **since** she was 10-years-old.



Vocabulary Grammar and Punctuation Terminology

Conjunction

A conjunction links two words, phrases or clauses together as part of a sentence.

There are two main types of conjunction:

Words such as **and**, **but** and **so** link two words or phrases which are equally important.

Words such as **because**, **if** or **when** introduce a subordinate clause.

- I got a bike for my birthday **and** I received a football for Christmas.
- **If** you like, we can have chips for tea.
- There's no tennis today **because** it's raining.



Vocabulary Grammar and Punctuation Terminology

Word Family

Words in a word family are related by meaning, grammar or spelling.

- Teach, **teacher**, teaching.
- **Child**, children, **childish(ly)**.

